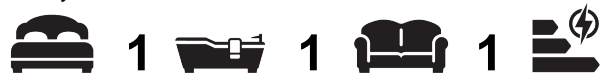




18 Portugal Street, London, WC2A 2AT

£4,900 Per month



A stunning one-bedroom apartment set within Lincoln Square. Comprising 582sq.ft of internal living space and finished to the highest specification. This property further offers a great deal of storage, open plan living and modern furnishings. Residents enjoy facilities such as a private resident's gymnasium, swimming pool, spa facilities, private cinema, communal gardens and 24-hour concierge.

You will be well placed for travel links of Chancery Lane, Holborn Underground Stations. LSE is literally on your doorstep. Offered furnished and available September 2026.

**Photos have been digitally dressed for this listing

Council Tax Band: Westminster, F

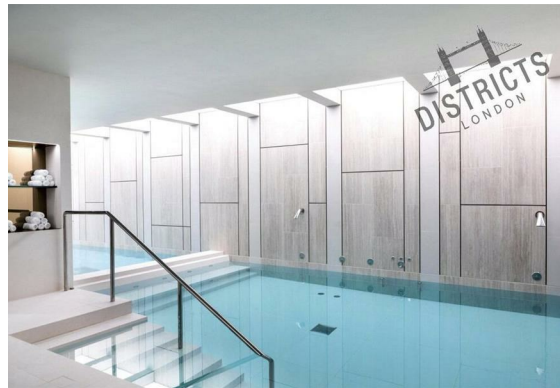
EPC: B

Change of contract fee: £50 including VAT

Holding Deposit: 1 weeks rent, subject to agreed offer

Electricity supply – Mains | Heating, Hot Water & Cooling – Communal supply | Water Supply & Sewerage – Mains | Lift Access

To check broadband and mobile phone coverage please visit Ofcom

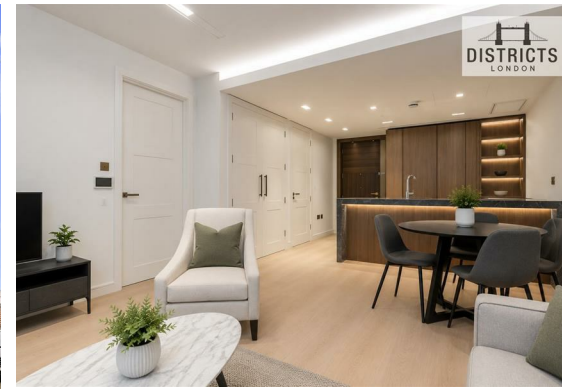




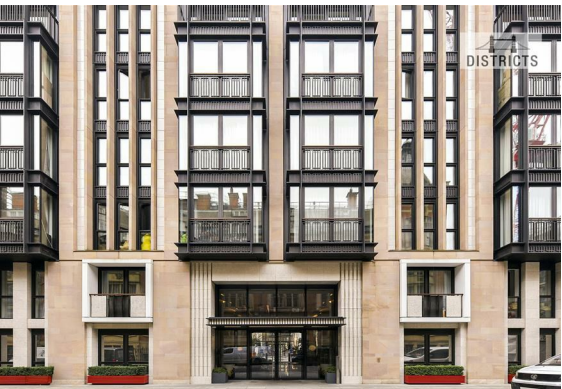
DISTRICTS
LONDON



DISTRICTS



DISTRICTS
LONDON



DISTRICTS



DISTRICTS

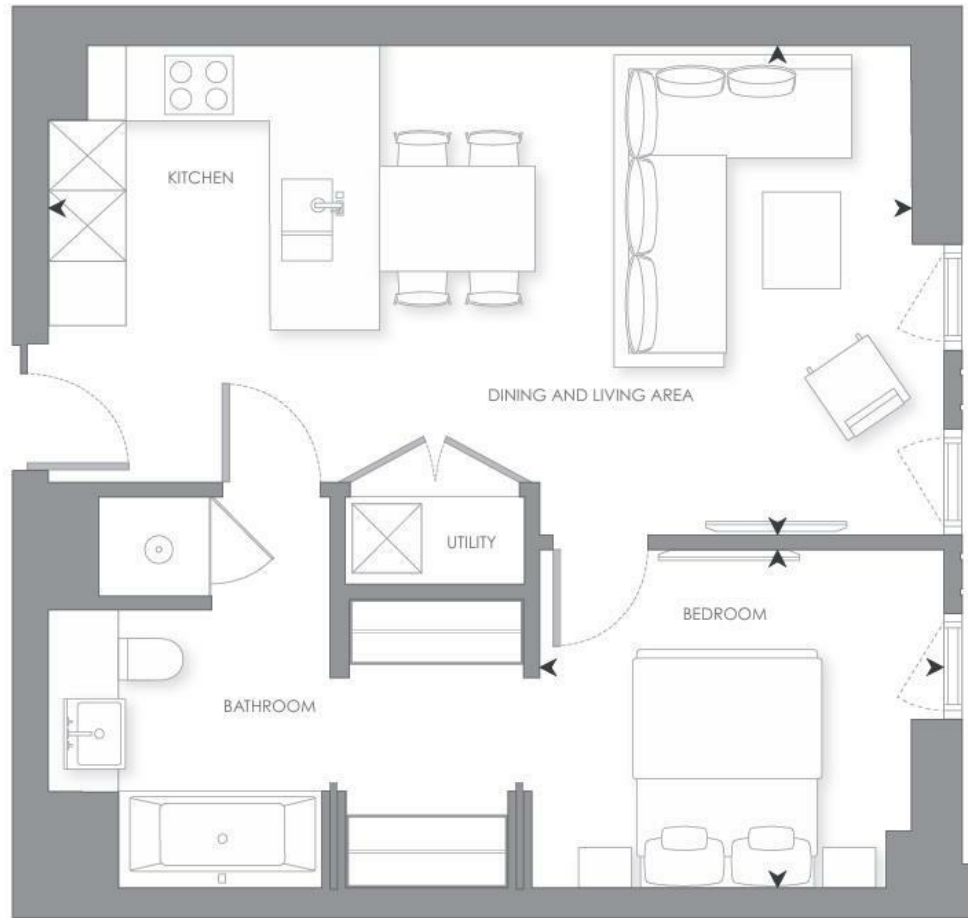


DISTRICTS
LONDON



DISTRICTS
LONDON

INTERNAL AREA	54 sq m	582 sq ft
LIVING ROOM/DINING/KITCHEN	7.61 x 4.16 m	24' 11" x 13' 7" ft
BEDROOM 1	3.46 x 2.9 m	11' 4" x 9' 6" ft



Energy Efficiency Rating		
	Current	Potential
Very energy efficient - lower running costs		
(92 plus) A		
(81-91) B		
(69-80) C		
(55-68) D		
(39-54) E		
(21-38) F		
(1-20) G		
Not energy efficient - higher running costs		
England & Wales	EU Directive 2002/91/EC	

These particulars, whilst believed to be accurate are set out as a general outline only for guidance and do not constitute any part of an offer or contract. Intending purchasers should not rely on them as statements of representation of fact, but must satisfy themselves by inspection or otherwise as to their accuracy. No person in this firm's employment has the authority to make or give any representation or warranty in respect of the property.